



**BUILT TO SOLVE.  
DRIVEN TO DELIVER.**

CORPORATE PROFILE  
MMXXV.





## Purpose-Built for Complex Challenges

*Founded in 2012, Layer Five Integrated Limited provides reliable technical solutions for Nigeria's industrial and energy sectors. We serve leading operators, EPCs, and government agencies with systems that support critical infrastructure and boost reliability.*

### **Integrated Services Across the Project Lifecycle**

We design, install, commission, and support scalable systems in power, instrumentation, control, ICT, and telecoms. Our work spans greenfield projects, brownfield upgrades, and asset maintenance. Notable projects include control panel integration at Jones Creek, a 17.5 MW power plant, and fire and gas detection for Sinopec and UERL.

### **Trusted by Clients, Backed by Partners**

We are trusted by SPDC, Greenville LNG, Savannah Energy, Notore, and Rom Oil, and work with global OEMs like Siemens, Schneider Electric, Honeywell, Omron, and Rockwell to deliver compliant, reliable systems.

### **Committed to Quality, Security, and Operational Excellence**

Our operations follow global best practices. Laminam Nigeria Limited is certified to ISO 9001, ISO 14001, ISO 27001, ISO/IEC 17025, and ISO 21001 standards, and is recognized by the Chartered Institute of Operations and Supply Chain Management, demonstrating our commitment to quality, security, and operational excellence.

***“From greenfield to brownfield, Layer Five delivers end-to-end systems integration trusted by top-tier clients, powered by global partnerships, and driven by a commitment to safety, quality, and long-term value.”***

### **Part of a Broader Vision**

As part of Layer Five Group, we collaborate with sister companies to deliver integrated solutions across engineering, agriculture, energy, and equipment, supporting Nigeria's industrial growth.

### **Driven by Excellence, Guided by People**


Our strength is in our people. Our team of engineers, integrators, safety experts, and project managers work to the highest standards of safety, compliance, and quality. With over 300,000 incident-free man-hours, we demonstrate a strong culture of care and precision.

### **Looking to the Future**

As demand grows for smarter, sustainable infrastructure, we help clients adapt and thrive. At Layer Five Integrated, we build lasting value through integrity, partnership, and purpose.



# Building with Purpose



When we started Layer Five Integrated Ltd in 2012, we set out with a clear purpose. We wanted to build a company that understands the complexities of industrial operations and delivers practical, high-quality solutions that keep systems running safely, efficiently, and intelligently. That purpose continues to guide us today.

As a provider of integrated technical, power, and automation solutions, we have grown steadily in scope and capability. Our services have touched critical infrastructure across sectors like energy, oil and gas, telecommunications, and manufacturing. From power systems and control infrastructure to ICT and instrumentation, we bring together the right people, technologies, and processes to deliver results that matter.

Layer Five Integrated Ltd is part of the Layer Five Group Limited, a dynamic group with businesses in engineering design, energy, agriculture, and equipment services. Together with our sister companies, we offer clients a broader platform of expertise, innovation, and partnership. This collaboration allows us deliver lasting value across project lifecycles.

We are proud of the work we have done, but even more proud of the trust our clients continue to place in us. That trust is earned every day by our people; talented professionals who understand the importance of safety, precision, and responsibility. Our culture is built on quality, not just in what we deliver, but in how we think, plan, and execute.

To our partners, clients, and team members, thank you. Your belief in us fuels our progress. As we look ahead, we remain committed to growing with purpose, working with integrity, and delivering solutions that help our clients thrive.

Sincerely,



**Emmanuel Enyiukwu**  
Group CEO  
Layer Five Group Ltd

## **Our Mission**

To deliver reliable, integrated technical, power, and automation solutions that improve operations, enhance safety, and drive sustainable value for our clients, partners, and communities.

## **Our Vision**

To be a trusted leader in industrial and infrastructure services across Africa by building systems that power progress, protect people, and preserve the environment.



# Our Values



## Integrity

We operate transparently in all our dealings. Trust is at the foundation of every relationship we build.



## Excellence

We pursue the highest standards in everything we do, from engineering to project execution and client service.



## Safety

We protect lives, assets, and environments by making safety a core part of our culture and operations.



## Innovation

We embrace smart thinking, new technologies, and better ways of solving problems that deliver long-term value.



## Accountability

We take responsibility for our work, our results, and the commitments we make to clients, colleagues, and communities.



## Teamwork

We believe in collaboration and the combined strength of our people and partners to achieve more together.



# Industries We Serve

Our solutions are built to meet the demands of high-impact industries where performance, safety, and reliability are critical. With a proven track record across private and public sector projects, we bring deep technical expertise and cross-sector insight to every engagement.



## Oil & Gas

We support upstream and downstream operations with instrumentation, control systems, fire and gas detection, pipeline automation, and commissioning services. Projects include flow stations, EPFs, compressor stations, and gas plants.



## Power & Energy

Layer Five offers electrical and control solutions for solar-hybrid, conventional, and renewable energy systems, covering MV/LV systems, VFDs, control panels, and large-scale commissioning.



## Manufacturing & Process Industries

We enhance plant efficiency and uptime through automation, instrumentation calibration, and electrical systems. Clients include FMCG plants, cement factories, and material handling operations.



## Telecommunications

We offer turnkey telecom solutions including fiber optics, microwave systems, BTS installations, and integrated power/data systems for towers and remote sites.



## ICT & Infrastructure

We design and implement critical ICT systems such as data centers, structured cabling, surveillance, and wireless networks; supporting secure, scalable infrastructure.



## Utilities & Public Infrastructure

We assist public utility sectors in upgrading electrical and control systems for water plants, hospitals, and public facilities, enhancing safety and reliability.



## Agriculture & Agro-Processing

Through group synergy, we support agro-industries with electrical systems, motor control, instrumentation, and automation for mills, refineries, and integrated farms.





# Power & Electrical Systems

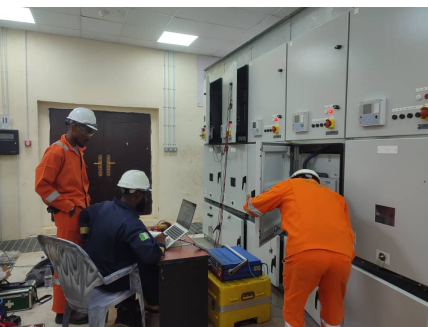
Our capabilities include:

## **Power Generation and Distribution Systems:**

We design, supply, and install complete power solutions using solar, hybrid, and diesel technologies. Whether for off-grid, backup, or grid-tied applications, we tailor our systems to meet client-specific energy demands.

## **Electrical Cable Works, Earthing, and Lightning Protection:**

Our team handles cable routing, termination, and panel integration, ensuring safe and compliant electrical distribution. We also implement earthing systems and surge/lightning protection to safeguard infrastructure from electrical faults and natural hazards.



*Layer Five Integrated Ltd provides turnkey power system services that meet the highest performance and safety standards. Our offerings span design, supply, installation, commissioning, and maintenance of LV, MV, and HV systems. We deploy solutions in both brownfield and greenfield contexts, offering expertise in power generation, switchgear systems, RMUs, MCCs, soft starters, harmonic mitigation, earthing, lighting (including hazardous area lighting), HVAC electrical supply, and energy audits. Whether solar-hybrid installations or VFD-powered motor systems, our approach ensures efficient and future-ready electrical infrastructure.*

## **VFDs, Soft Starters, Motor Control Centers (MCCs), and Lighting Systems:**

We deploy Variable Frequency Drives (VFDs) and soft starters for efficient motor control, reducing energy consumption and mechanical stress on equipment. Our Motor Control Centers (MCCs) provide centralized control and protection for multiple motors, while our customized industrial and commercial lighting systems enhance visibility and safety across facilities.

## **Hazardous Area Electrical Inspection and Certification**

We conduct specialized electrical inspections and certifications for hazardous areas, ensuring compliance with ATEX, IECEx, and other international safety standards.

## **Case Study Highlight**

*For Greenville LNG in Rumuji, we executed a comprehensive high-voltage project involving the installation and commissioning of an 11kV switchgear extension. This included HV cable works, 2MVA transformer installation, tie-in to the existing feeder, and system energization, delivered safely and within schedule.*

# Instrumentation & Calibration

*We deliver precision-driven instrumentation and calibration services tailored to process industries. Our expertise covers the installation, loop checking, and calibration of pressure, flow, level, and temperature instruments. With certified mobile units and technicians trained for hazardous area compliance, we ensure measurement accuracy and system reliability in line with international standards such as ISO /IEC 17025.*

Our capabilities include:

## Field Instrumentation Installation & Calibration

Installation, loop checking, and precise calibration of field instruments including transmitters for pressure, temperature, flow, and level, ensuring optimal performance and measurement reliability across critical processes.

## Valve Calibration & Testing

Calibration and functional testing of shutdown valves (SDVs), blowdown valves (BDVs), actuators, solenoid valves, and positioners, enhancing system responsiveness and safety integrity.

## Fire & Gas Detection Systems

Installation, testing, and maintenance of fire and gas detectors, control panels, and suppression systems to ensure early hazard detection and regulatory compliance in high-risk environments.

## HART & Fieldbus Configuration

Configuration and troubleshooting of HART and Foundation Fieldbus-compatible devices for seamless digital communication, diagnostics, and integration within distributed control systems (DCS).

## Relief Valve Inspection & Mobile Lab Services

On-site inspection, testing, and certification of pressure relief valves using mobile calibration labs, minimizing downtime while meeting industry codes and standards.



### Case Study Highlight

*At Greenville LNG (Train 3), we were engaged to design and implement a complete flare gas metering solution. This involved the installation and calibration of flow meters and instrumentation, cable termination, and final system commissioning, supporting emissions monitoring and regulatory compliance.*





# Control Systems & Automation

*Layer Five Integrated Ltd delivers robust and intelligent control system architectures that enhance operational efficiency and plant reliability. By integrating advanced PLC, SCADA, HMI, and DCS technologies, we enable real-time monitoring, seamless automation, and precision control across industrial facilities.*

Our core services include:

## **PLC, HMI, and SCADA Programming & System Upgrades**

We develop customized PLC logic, HMI interfaces, and SCADA systems for real-time process monitoring and control. We also upgrade outdated control systems, ensuring improved compatibility with modern platforms.

## **DCS Migration and Integrated Safety Systems (SIS, ESD, HIPPS)**

We migrate legacy DCS platforms to modern, vendor-neutral systems while minimizing operational disruptions. Our solutions integrate Safety Instrumented Systems (SIS), Emergency Shutdown Systems (ESD), and High Integrity Pressure Protection Systems (HIPPS), ensuring compliance with safety standards and protect critical assets.

## **Distributed Control Architecture and Remote Asset Integration**

We design and deploy distributed control architectures that support decentralized operations and facilitate real-time communication across multiple assets. Our remote integration services enable centralized monitoring and control of field equipment in hard-to-reach or unmanned locations.

## **Factory Acceptance Testing (FAT), Site Acceptance Testing (SAT), and Custom Control Panel Fabrication**

We conduct comprehensive FAT and SAT procedures to validate system performance before and after deployment. We also design and fabricate custom-engineered control panels built to client specifications, and meeting safety and performance standards.

### **Case Study Highlight**

*We designed, fabricated, and commissioned a full PLC-based control system at the Jones Creek facility (OML 42). The project modernized field automation, improved operator control, and reduced downtime through advanced process monitoring and control integration.*



# Telecommunications Infrastructure

*Our telecommunications division provides end-to-end solutions for robust, high-performance communication systems across industrial and commercial environments. We design and deploy reliable infrastructure including RF and microwave networks, fiber optics, and IP telephony to support voice, data, and telemetry transmission in remote, high-demand, and mission-critical operations.*

Our Telecommunications Infrastructure Services Include:

## **Microwave Radio and RF Installations:**

Design, installation, and commissioning of high-capacity microwave and radio frequency (RF) systems for point-to-point and point-to-multipoint communication links, ensuring reliable connectivity across wide areas.

## **Fiber Optic Cable Laying, Splicing, and OTDR Testing:**

Deployment of underground and aerial fiber networks, with precision splicing and Optical Time-Domain Reflectometer (OTDR) testing to verify signal integrity and performance across long distances.

## **BTS and Remote Site Integration:**

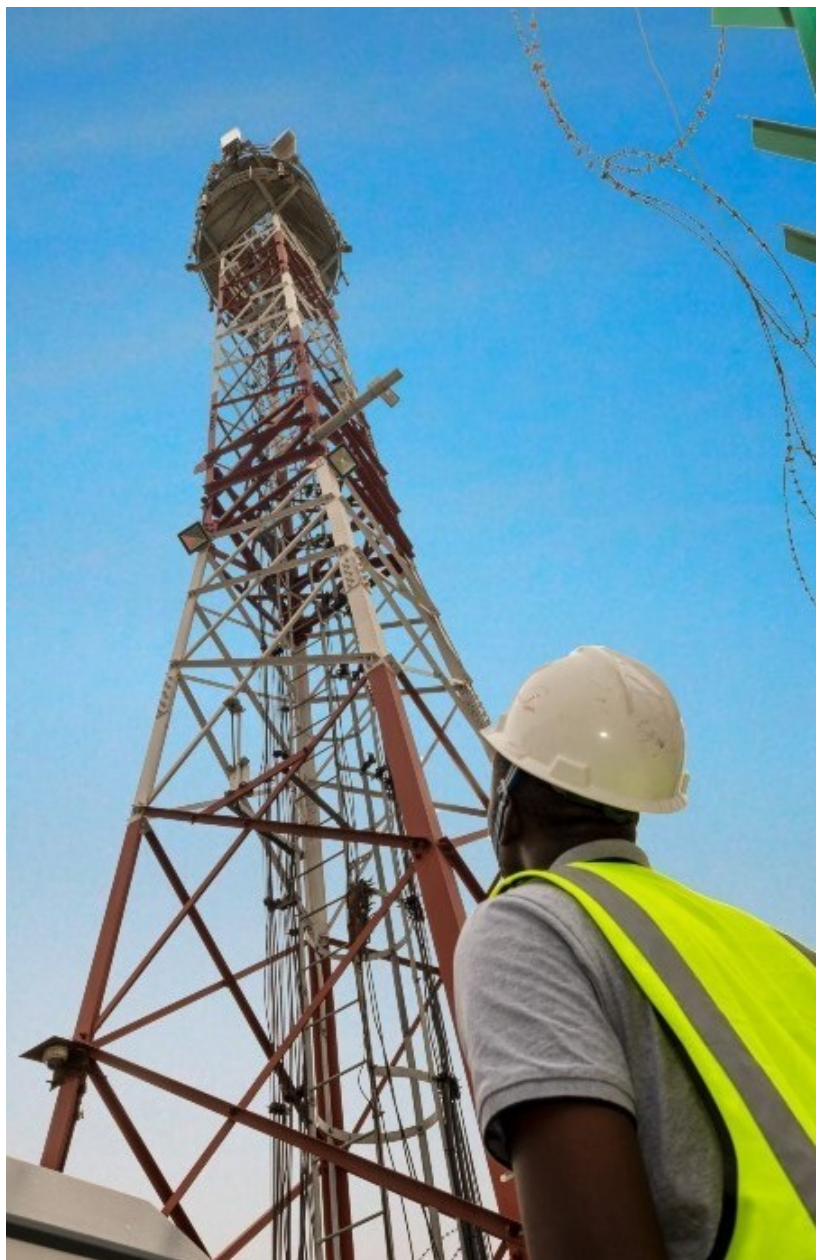
Installation and integration of Base Transceiver Stations (BTS) and remote telecom sites, including backhaul connectivity, antenna systems, and environmental controls for seamless network operation.

## **Structured Cabling and Surveillance Systems:**

Deployment of structured cabling for data and voice networks, along with installation of IP-based CCTV and surveillance systems to enhance security and monitoring capabilities.

## **Line-of-Sight (LOS) Surveys, Tower Grounding, and Telecom Power Systems:**

Execution of LOS surveys for optimal signal planning, grounding and lightning protection for towers, and implementation of reliable power systems including backup solutions for uninterrupted telecom operations.



### **Case Study Highlight**

*As part of the OSO Gas Lift Project with Mobil Producing Nigeria, we installed and integrated a remote telemetry system, enabling real-time gas lift performance tracking and control from remote operation centers.*



# ICT Services

*We deliver tailored Information and Communication Technology (ICT) solutions designed to support secure, scalable, and high-performance environments. Our services span network infrastructure design, data center setup, custom software development, access control systems, and web solutions, ensuring dependable IT operations for both onshore and offshore applications.*

Our ICT Services Include:

## **Data Center Construction and Server Room Integration:**

Design and build of secure, climate-controlled data centers and server rooms, including power, cooling, fire suppression, rack installation, and structured cabling—engineered for high availability and uptime.

## **Network Design, Cabling, and Wireless Systems:**

Planning and deployment of robust enterprise networks including LAN/WAN systems, structured copper and fiber cabling, Wi-Fi networks, and secure wireless access points for seamless data connectivity.

## **Marine Cable TV and Structured Cabling:**

Installation and maintenance of marine-grade cable television systems and structured cabling infrastructure aboard vessels and offshore platforms, built to withstand harsh environments and ensure signal reliability.

## **IT Support, Diagnostics, and System Recovery:**

Comprehensive IT helpdesk and field support services, including hardware and software diagnostics, preventive maintenance, and rapid system recovery for business continuity.

## **Surveillance, Security, and Access Control Integration:**

Deployment of IP-based CCTV systems, biometric access control, intrusion detection, and integrated security platforms for enhanced physical and digital asset protection.



### **Case Study Highlight**

*Layer Five has implemented ICT infrastructure—cabling, server configuration, surveillance, and access control across various project sites, supporting the digital backbone for power, telecom, and oil & gas operations.*



## Renewable Energy & Hybrid Systems

*We provide end-to-end solar and hybrid energy solutions that drive off-grid electrification and long-term sustainability. Our capabilities include system design and simulation, BMS-integrated energy storage, and turnkey solar deployments tailored for rural communities, industrial operations, and institutional facilities. Each solution is built for efficiency, resilience, and environmental impact.*

Our Renewable Energy & Hybrid Systems Services Include:

### **Solar PV System Design, Installation, and Commissioning :**

Comprehensive design and deployment of solar photovoltaic (PV) systems, including load analysis, simulation, component selection, installation, and final commissioning—optimized for performance, reliability, and local conditions.

### **Hybrid Systems :**

Design and implementation of hybrid energy systems that combine solar power, diesel generators, and battery storage to ensure continuous, cost-efficient power supply for off-grid or backup applications.

### **Battery Storage Systems and BMS Integration:**

Deployment of scalable energy storage systems featuring lithium-ion and other battery technologies, integrated with intelligent Battery Management Systems (BMS) for efficient charging, load balancing, and long-term performance monitoring.

### **Solar-Powered Site Electrification and Rural Energy Planning :**

Turnkey electrification projects for rural communities, institutional campuses, and remote facilities, including feasibility studies, solar mini-grid planning, infrastructure deployment, and sustainability consulting.



### **Case Study Highlight**

*As part of a health sector electrification program in Kaduna State, we installed off-grid solar systems across multiple rural healthcare centers. The project enabled reliable power for critical medical equipment and improved access to care in underserved areas.*





## Mechanical, Civil, and MEP Works

*We execute structural, mechanical, and utility infrastructure projects tailored to complex industrial environments. Our capabilities span HVAC systems, process piping, ductwork, foundation construction, and full MEP (Mechanical, Electrical, and Plumbing) integration—supporting power generation, processing facilities, and large-scale infrastructure developments.*

Scope of Services Includes:

### **HVAC Systems, Fans, and Ducting Installation**

Design, supply, and installation of industrial and commercial HVAC systems, including air handling units, exhaust fans, and precision ductwork ensuring efficient climate control and air quality compliance.

### **Equipment Foundation Construction and Structural Steelworks**

Construction of reinforced concrete foundations, plinths, and base frames for heavy equipment, along with fabrication and erection of structural steel elements to support plant infrastructure.

### **Utility Piping, Skids, and Modular Mechanical Systems**

Fabrication and installation of process and utility piping systems, pre-assembled skid units, and modular mechanical packages optimized for rapid deployment and operational reliability.

### **MEP Support for Integrated Engineering Projects**

End-to-end mechanical, electrical, and plumbing integration in support of multidisciplinary projects, ensuring seamless coordination across engineering disciplines for industrial and infrastructure developments.



### **Case Study Highlight**

*For Savannah Energy in Rumuji, we provided mechanical and electrical integration for flare infrastructure. Scope included compressor motor commissioning, VFD system deployment, and structural support for field lighting and earthing systems.*

# Project Management & Technical

*We offer comprehensive engineering and project consultancy services across the entire asset lifecycle—from Front-End Engineering Design (FEED) and Detailed Engineering Design (DED) to on-site supervision, quality control, and regulatory compliance. Our approach ensures clarity, risk mitigation, and seamless coordination at every project phase, helping clients deliver with confidence and precision.*

Scope of Services Includes:

## **FEED and DED for Industrial Systems and Utilities :**

Development of Front-End Engineering Design (FEED) and Detailed Engineering Design (DED) for process facilities, utility systems, and infrastructure projects ensuring technical feasibility, cost-effectiveness, and smooth execution from concept to implementation.

## **Project Scheduling, Supervision, and Logistics Planning :**

Comprehensive project planning and execution support, including detailed scheduling, resource allocation, contractor supervision, and site logistics coordination to ensure timely and efficient delivery.

## **QA/QC, Pre-Commissioning, and O&M Support**

Implementation of robust Quality Assurance and Quality Control (QA/QC) frameworks, support for pre-commissioning activities, and preparation of operations and maintenance (O&M) documentation to ensure asset reliability and long-term performance.

## **Compliance Support for NUPRC, NMDPRA, and HSE Regulations**

Guidance and documentation for meeting regulatory requirements from key industry bodies such as the Nigerian Upstream Petroleum Regulatory Commission (NUPRC), the Nigerian Midstream and Downstream Petroleum Regulatory Authority (NMDPRA), and HSE authorities, ensuring full statutory compliance throughout project phases.



### **Case Study Highlight**

*As part of TOTAL's ICSS upgrade project at OML 58, we provided full support for panel installation, cable management, QA/QC oversight, and commissioning activities, ensuring compliance and smooth system integration.*





# Hazardous Area Services

*We are certified to deliver end-to-end hazardous area solutions—from classification and equipment selection to installation and inspection in line with international standards including ATEX, IECEx, and NESIS. Our services are designed to ensure safety, regulatory compliance, and operational integrity in explosive and high risk environments.*

Scope of Services Includes:

## **Ex Equipment Installation and Inspection:**

Installation and visual, close, and detailed inspection of explosion-protected (Ex) equipment in hazardous areas, in accordance with certified drawings and international safety requirements.

## **IS Barrier Configuration and Cable Gland Selection :**

Proper configuration of Intrinsically Safe (IS) barriers and accurate selection and installation of Ex-rated cable glands to ensure safety, containment, and compatibility in classified zones.

## **Periodic Inspection and Dossier Compilation:**

Scheduled inspections, functional testing, and complete documentation of hazardous area equipment and installations, including the preparation and maintenance of Ex equipment dossiers for regulatory audits.

## **Compliance with ATEX/IECEx and NESIS Guidelines:**

Full alignment with international (ATEX, IECEx) and Nigerian (NESIS) standards for hazardous area classification, design, installation, and maintenance, ensuring both global and local compliance.



### **Case Study Highlight**

*We have conducted hazardous area inspections and installations across gas processing facilities and flow stations, ensuring conformity with NESIS and IECEx standards through certified inspections, equipment tagging, and audit-ready documentation.*



## Selected Past Projects

|   | Project Title   | Scope Summary  | Location         | Client Name                       |
|---|---|--|------------------|-----------------------------------|
| <b>Electrical &amp; Instrumentation (E&amp;I)</b> |   |  |                  |                                   |
| 1   | Electrical & Instrumentation Works for 160MMSCFD Gas Processing Plant at Rumuji     | HV/LV panel and cable tray installation, switchgear commissioning                                      | Rivers State     | Greenville LNG                    |
| 2   | Electrical & Instrumentation Works for LNG Regasification Plant at Ibadan           | Instrumentation and electrical works, calibration, perimeter lighting, commissioning                   | Oyo State        | Rom Oil Mills Ltd                 |
| 3   | Electrical & Instrumentation Installation for Industrial Gas Plant at Aba           | Instrumentation and electrical works, calibration, perimeter lighting, commissioning                   | Abia State       | Inner Galaxy Steel Co Ltd         |
| 4   | Electrical & Instrumentation Completion for Refrigeration Unit at Uquo CPF (OML 13) | Cable tray work, transformer install, MV terminations, valve/instrument calibration, VFD commissioning | Akwa Ibom State  | Savannah Energy                   |
| 5   | Complete Electrical & Instrumentation Works for Bitumen Emulsion Plant at Warri     | Plant instrumentation, cabling, VFD setup, PLC, boiler integration, lighting and commissioning         | Delta State      | Gradient Emulsions & Polymers Ltd |
| 6   | Electrical & Instrumentation and Boiler Integration for Power Station at Sapele     | Electrical layout, instrument distribution, boiler controls, system commissioning                      | Delta State      | Inez Global Investment Limited    |
| 7   | Electrical & Instrumentation for Switchgear Upgrade at Rumuji                       | 11kV switchgear, 2MVA transformer, HV cable works and commissioning                                    | Rivers State     | Greenville LNG                    |
| 8   | Installation of Instruments for Train 3   | PT, TT, LT, PG, valve installs and hookup, commissioning support                                       | Rivers State     | Greenville LNG                    |
| <b>Control Systems &amp; Automation</b>           |   |  |                  |                                   |
| 9   | PLC Control System for Jones Creek Station  | Control panel fabrication, PLC/SCADA programming, FAT, hookup and commissioning                        | Delta State      | Lee Engineering, Ellatec and NNPC |
| 10  | Control System Upgrade for OML 58   | ICSS panel install, cabling and commissioning support  | Rivers State     | Intech and Total                  |
| 11  | Customized Watercut Integration into DCS at Santa Barbara Flowstation               | Metering system DCS integration, cabling, commissioning  | Bayelsa State    | Intech and SPDC                   |
| 12  | Integration of AGAR Watercut Meter at Rumuekpe Flowstation                          | Agar meter install and integration   | Rivers State     | Intech and SPDC                   |
| 13  | Flare Gas Metering System for Greenville LNG Train 3                                | Flowmeter and cabling works, instrumentation and commissioning   | Rivers State     | Greenville LNG                    |
| 14  | Telemetry Control for Gas Lift Project at Oso                                       | Deployment of telemetry for lift system  | Offshore Nigeria | Intech and MPNU                   |
| 15  | Commissioning Support for Process Control Panels at Belema Flowstation              | Testing and handover of field control systems  | Rivers State     | Intech and SPDC                   |



|  | Project Title  | Scope Summary  | Location                               | Client Name                       |
|--|--|--|--|-----------------------------------|
| <b>Power Systems (Generation, Distribution &amp; Drives)</b> |  |  |  |                                   |
| 16   | Installation & Commissioning of 17.5MW Gas Power Plant                                 | Installation of gas engines, LV/MV panels, transformers, auxiliaries and commissioning | Rivers State                           | Greenville LNG                    |
| 17   | VFD and Export Pump Integration at Ibeno   | Export pump setup, VFD system install and commissioning                                | Akwa Ibom State                        | Network E&P                       |
| 18   | 28MW Variable Frequency Drives Installation for Trains 1, 2 and 3                      | MV/LV panel and transformer install, trenching, cabling and commissioning              | Rivers State                           | Greenville LNG                    |
| 19   | Switchgear and Transformer Upgrade Project   | HV switchgear, transformer and HV cable installation, tie-in and commissioning         | Rivers State                           | Greenville LNG                    |
| <b>Renewable Energy &amp; Storage</b>                        |  |  |  |                                   |
| 20   | Solar Power Mini-Grids for Healthcare Centres  | Deployment of 34 off-grid solar systems totalling 1.57MWp                              | Kaduna State                           | MP Infrastructure Nigeria         |
| 21   | Battery Backup Deployment for Bank Branches  | Installation of 650kWh battery storage across 15 bank locations                        | Various                                | MP Infrastructure, and Rana World |
| <b>Surveillance, Access Control &amp; Safety</b>             |  |  |  |                                   |
| 22   | Access Control & Surveillance System Deployment at 5km <sup>2</sup> Facility at Rumuji | Trenching, JB install, card readers, turnstiles, cable integration and commissioning   | Rivers State                           | Greenville LNG                    |
| 23   | Lightning Protection and Earthing Installation   | Design and installation of lightning system and grounding, testing                     | Delta State                            | Gradient Bitumen                  |
| 24   | Earthing and Lightning Protection for Transmission Stations                            | Earth grid and Indelec air terminal install at 70m masts in 3 cities                   | Rivers, Abia and Enugu                 | Family Love FM                    |
| 25   | Fire & Gas Detection and Alarm System  | Detector and alarm install, panel config and commissioning                             | Akwa Ibom State                        | Universal Energy and SINOPEC      |
| <b>Other Specialized Works</b>                               |  |  |  |                                   |
| 26   | HVAC System Revamp for Energy Facility   | Compressor, duct, dryer replacement, panel upgrade and start-up                        | Akwa Ibom                              | Savannah Energy                   |
| 27   | Flare Ignition System Installation at Rumuji   | Flare instrumentation, metering, calibration and commissioning                         | Rivers State                           | Savannah Energy                   |
| 28   | Flare Gas Reduction Project at OML 100   | Flare metering, control and reduction system implementation                            | Offshore Nigeria (Afia, Odudu, Edikan) | Intech and Total                  |
| 29   | BNAG Production Facility Upgrade   | Pump, valve, actuator, cable tray and tubing installation with commissioning           | Rivers State                           | SPDC, Strides and Intech          |
| 30   | Turbine Flow Meter Calibration   | Calibration of turbine meters at early production facility                             | Akwa Ibom                              | Universal Energy and SINOPEC      |
| 31   | Instrumentation Retrofit and Metering Works at Rumuekpe Flowstation                    | Watercut and PD meter install, cable tray and support fabrication                      | Rivers State                           | Intech and SPDC                   |
| 32   | Agar Probe Installation on Process Vessels at Bonny                                    | Installation of probes, JB and cable tray supports                                     | Rivers State                           | SPDC, Strides and Intech          |

## Installation and Commissioning of 17.5MW Gas Power Plant

**Client** : Greenville LNG

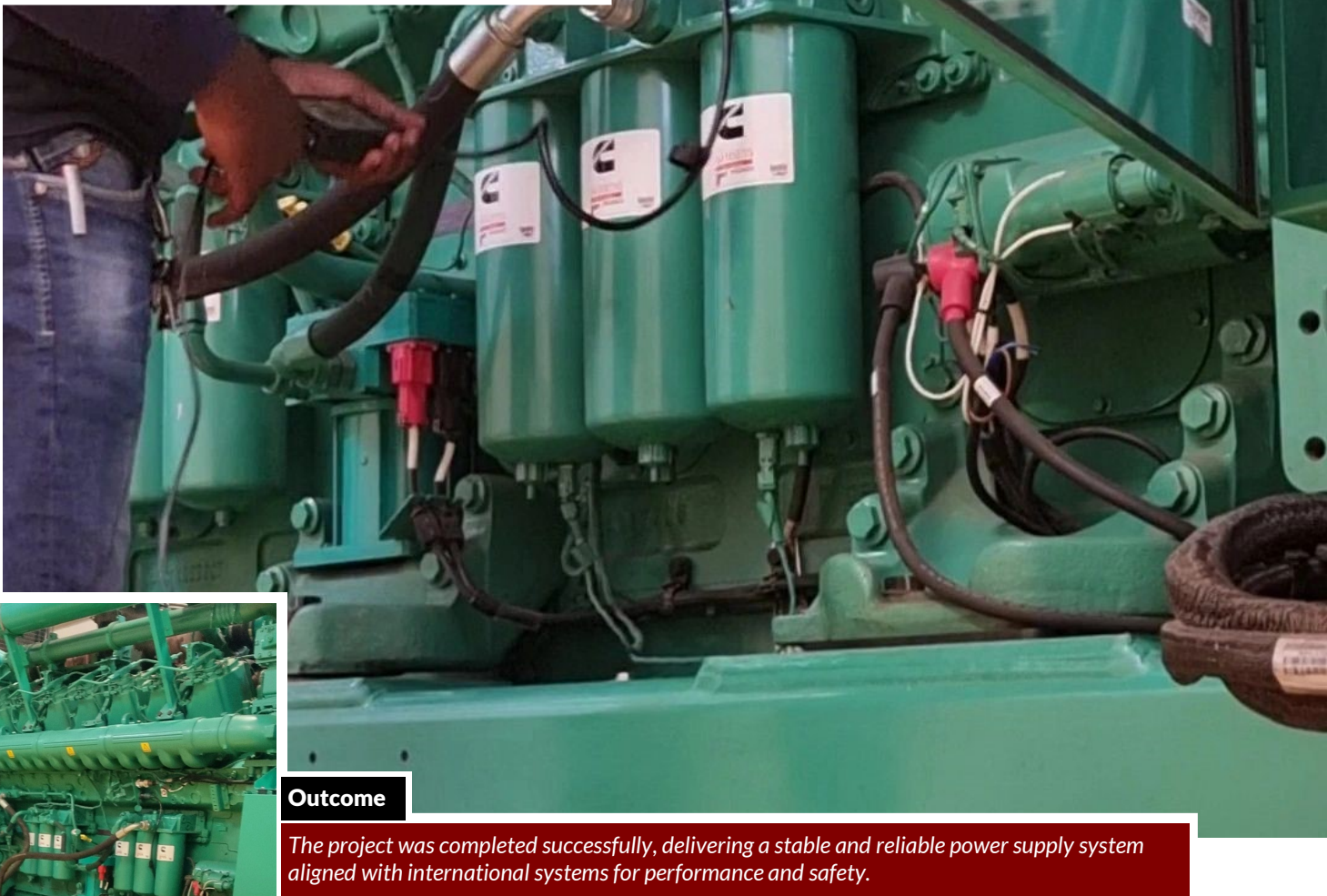
**Location** : Rivers State

### Overview:

Layer Five Integrated Ltd executed the complete installation and commissioning of a new 17.5MW power generation plant. The project involved the procurement and installation of five Jenbacher 3.5MW gas engines along with associated power systems infrastructure.

### Scope of Work

The team installed SecoGear medium-voltage (MV) panels, low-voltage (LV) panels, generator auxiliary panels, and ST4 panels. Two 1250KVA transformers, cooler fans, and louver fans were also installed. Cable trays and supports were fabricated and fitted, followed by MV cable termination. The project required intensive project management coordination across internal and external stakeholders, culminating in comprehensive pre-commissioning and final commissioning.



### Outcome

*The project was completed successfully, delivering a stable and reliable power supply system aligned with international systems for performance and safety.*



## Integration of PLC Control System at Jones Creek

**Client** : Ellatech, Lee Engineering, and NNPCL

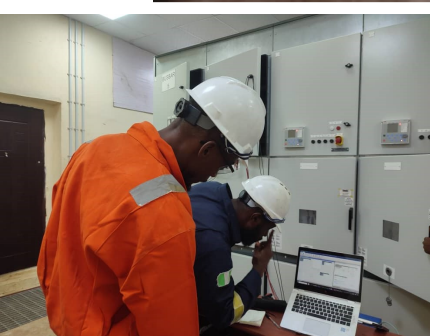
**Location** : OML 42

### Overview:

As part of infrastructure upgrades at the Jones Creek facility, Layer Five Integrated Ltd was engaged to design and implement a full control system for the process plant.

### Scope of Work

The project included the design of the facility's control system, fabrication and internal wiring of the PLC panel, PLC programming, and SCADA development. A factory acceptance test (FAT) was conducted, followed by on-site hookup and site acceptance testing (SAT). The company also managed stakeholder coordination and executed pre-commissioning and commissioning tasks.



### Outcome

*The system was delivered with full automation functionality, significantly improving plant operability, safety, and monitoring capabilities.*



Selected Past Projects

## Electrical & Instrumentation Works for 160 MMSCFD Gas Processing Plant

**Client** : Greenville LNG

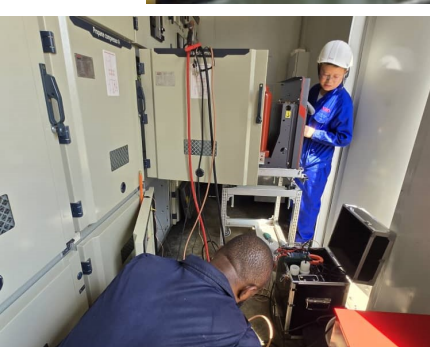
**Location** : Rivers State

### Overview:

Layer Five executed the electrical and instrumentation works for a 160 million standard cubic feet per day (MMSCFD) gas cleaning plant. This was part of a larger midstream gas development initiative.

### Scope of Work

The project involved cable tray fabrication and installation, installation and commissioning of high-voltage switchgear systems, low-voltage panels, and extensive cable management activities including pulling, termination, and testing.



### Outcome

Layer Five successfully delivered a fully integrated and commissioned E&I system, ensuring safe and continuous operation of the gas processing facility in line with client expectations.



Selected Past Projects

## Electrical & Instrumentation Works for Warri Bitumen and Emulsion Plant

**Client** : Gradient Emulsions & Polymers Ltd

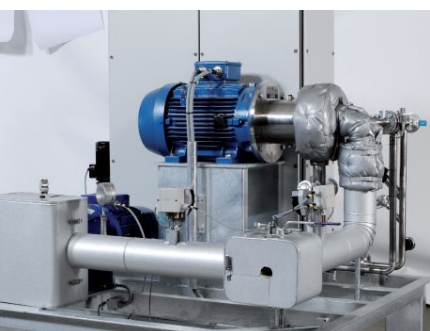
**Location** : Delta State

### Overview:

Layer Five was contracted for the full E&I design, construction, and commissioning of a bitumen and emulsion production plant in Warri.

### Scope of Work

Key installations included an 8MW variable frequency drive (VFD), MV and LV panels, transformers, measuring instruments, safety and control valves, PLC and F&G panel integration, and comprehensive earthing systems. Cable trays were fabricated and installed, along with trench excavation, cable pulling, and terminations. Internal lighting, boiler system instrumentation, and safety calibrations were also executed.



### Outcome

*The facility was successfully brought online with all control and safety systems fully operational, significantly enhancing production reliability and plant safety compliance.*



## Re-Gasification Plant Electrical & Instrumentation Installation

**Client** : Rom Oil Mills

**Location** : Oyo State

### Overview:

For an agro-industrial facility, Layer Five provided a turnkey solution covering design, procurement, installation, and commissioning of electrical and instrumentation systems for a re-gasification plant.

### Scope of Work

Activities included installation and calibration of temperature transmitters (TT), pressure transmitters (PT), differential pressure transmitters (PDT), pressure gauges (PG), and safety valves. EX perimeter lighting was installed for hazardous areas, along with full cable routing, glanding, and terminations. The team also implemented lightning protection systems and completed pre-commissioning and commissioning phases.



### Outcome

*The project enabled the client to safely and efficiently operate its gas-based heating system for processing, aligning with best practices for instrumentation and plant safety.*



# Our Collaborative Ecosystem

## OEM Technology Partners

Our work is powered by partnerships with globally recognized original equipment manufacturers, allowing us to deliver compliant, future-ready systems built on proven technology platforms.

**YOKOGAWA** ◆

Collaboration on advanced process control, instrumentation, and automation systems for complex facilities.

**EAT•N**

Collaboration on power distribution and protection systems across industrial and energy projects.

**FLIR**®

Thermal imaging and sensing technology partner for safety, surveillance, and inspection solutions.

**Pro-face**

by **Schneider Electric**

HMI solution provider for industrial automation and machine interface integration.

 **CanadianSolar**

Make the Difference

Partner for solar module supply and renewable energy project support.

 **LIGHTNING MASTER**

Provider of lightning protection and static control solutions for hazardous environments.

**FITOK**

Supply partner for high-quality valves, fittings, and instrumentation components in fluid and gas systems

## Engineering & Integration Partners

We collaborate with specialized engineering, automation, and integration partners to enhance our capabilities in complex system design, project delivery, and digital transformation.

**INTECH**

AUTOMATION • INTELLIGENCE

Technical collaboration on process automation, control system integration, and SCADA deployments

 **SOFCON**

Engineering and automation partner for turnkey control systems and industrial digitization

**VIACLIMATE**®

AIR TECHNOLOGIES

Partner in delivering intelligent HVAC and building automation solutions for climate control


 **Rana**

GROUP OF COMPANIES

Supply partner for industrial consumables and electrical components.

## Group Affiliates

As part of a diversified group, we work alongside affiliate companies in engineering, e-commerce, agriculture, and energy to offer cross-sector solutions that address emerging industrial needs.

 **Layerfive Group**

Non-operating holding company overseeing Layer Five Integrated Ltd and its sister companies.

 **beep**

ENGINEERING

Engineering partner delivering multidisciplinary engineering services in oil & gas, power, and infrastructure sectors.

 **Smarttools**

Partner supplying professional-grade tools and test equipment for industrial and engineering needs.

**Layerfive Energy**

Producer of high-purity industrial gases and supplier of petroleum products for industrial, and energy applications.

 **LayerfiveAgro**

Engaged in sustainable cassava and coconut farming, processing, and value-added agro-products.

# Our Clients

We are proud to serve a diverse portfolio of clients across the oil & gas, power, manufacturing, infrastructure, and telecom sectors. From multinational corporations to public institutions and local industry leaders, our clients trust us to deliver safe, reliable, and scalable solutions that meet complex operational needs. These long-standing relationships are a testament to our commitment to quality, innovation, and results.





**Version: Q3.2025**

The information provided in this company profile is valid as of the version date listed above. To verify the accuracy or obtain the most up-to-date information, please contact [info@layerfiveld.com](mailto:info@layerfiveld.com)



**LAYER FIVE INTEGRATED LTD**

28b Flaming Avenue, Rumuomasi, Port Harcourt, Rivers State, Nigeria

+234(0)8038099423, 08082374451, 08139722228

[info@layerfiveld.com](mailto:info@layerfiveld.com)